

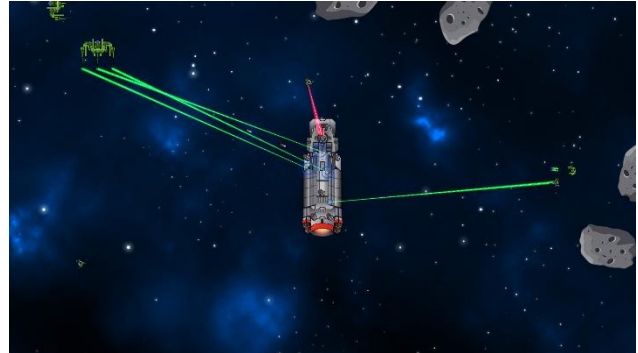
Ark Defender Press Kit

The game in a sentence:

A roguelike missile command where you captain the Ark, humanity's last hope, through a hostile galaxy. How long will you survive?

Description:

Humanity flees a disaster in the Terran Republic, but only a handful survive. The survivors flee into the galaxy in whatever ships can be retrofitted for multi-generational deep space survival. These Arks hold the last remnants of Humanity. The remains of the Republic's worlds are hurled at super relativistic speeds ahead of the Arks, seeding space with deadly asteroids.



Players take control of an Ark and defend it from threats without... and within. Everything from hostile aliens and asteroids to civil wars, cults, and acts of vandalism will rear their heads. Players decide the fate of the Ark's populace. Are they ruled by a tyrant or is chaos allowed to reign? Perhaps democratic governments take hold, or maybe players just vent all their problems into space.

Game Stats

Developed By: Mischief and Mayhem Studios

Release Date: July 11th 2022

Platforms: Steam

Price: \$9.99

Availability: Digital Download

Languages: English

ESRB: T for teen

Contact: mischiefmayhemstudios@gmail.com

Website: mischiefandmayhemstudio.com

Twitter: <https://twitter.com/MischiefandMay3>

YouTube: <https://www.youtube.com/channel/UCraKENFlnx5SPQM3PbV0AcA>

Mischief and Mayhem Studios

Mischief and Mayhem Studios was started by Alexander Goldberg in Summer of 2020. The studio develops small to medium independent games that focus on engaging game loops for players on PC platforms. Mischief and Mayhem Studios relies on a variety of reliable and consistent contractors to produce their games. Mischief and Mayhem Studios is a remote studio, eschewing a brownstone in favor of flexibility for its contractors.

Ark Examples:

While players initially start with the cargo hauler, they can unlock other Arks through gameplay. Each Ark has its own playstyle.

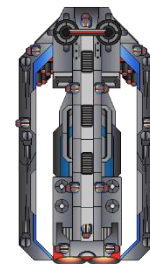
Converted Cargo Hauler

The Cargo Hauler started life hauling along Republic shipping lanes, but when disaster struck it was converted into an Ark for survivors. It is the default Ark that players have access to and has cheaper weapons but otherwise is average all around.



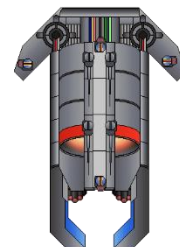
Battleship

Really more a carrier than a traditional battleship, like many Republic military vessels (that were large enough) it was converted into an Ark to house survivors. With more weapons and heavy armor, the Battleship is slower than other Arks but has more expensive weapons.



Cruise Ship

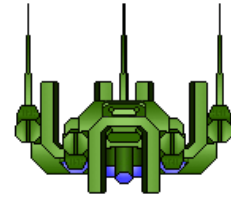
Formerly a luxury star liner, this ship was converted into an Ark due to its massive capacity for holding humans. The ship is neither as heavily armed as the Battleship nor as capable of manufacturing weapons as the Hauler, but it can support both a large crew and additional support vessels.



Enemy Examples:

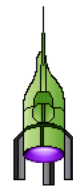
Tuluu'Daleth Light Frigate

Light frigates are heavily armored enemies and the first real threat players will come across. Besides taking a lot of damage before going down, they can also deal out a lot of damage to an unprepared Ark.



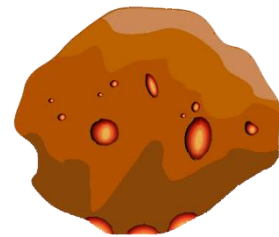
Vereen Spinner

These ships limit where the Ark can attack by weaving an energy trail which detonates any missiles that come in contact with it.



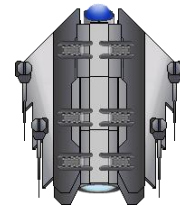
Mulrum Planetoid

Mulrum Planetoids have gravity wells that drive Ark missiles off course. They circle the Ark, drawing fire so their allies are free to attack without concern!



Network Battleship

Large ships of a synthetic race. In addition to their powerful beam weapons and missiles, these ships are fully equipped with cloaking devices making them hard to hit!



Screenshots

